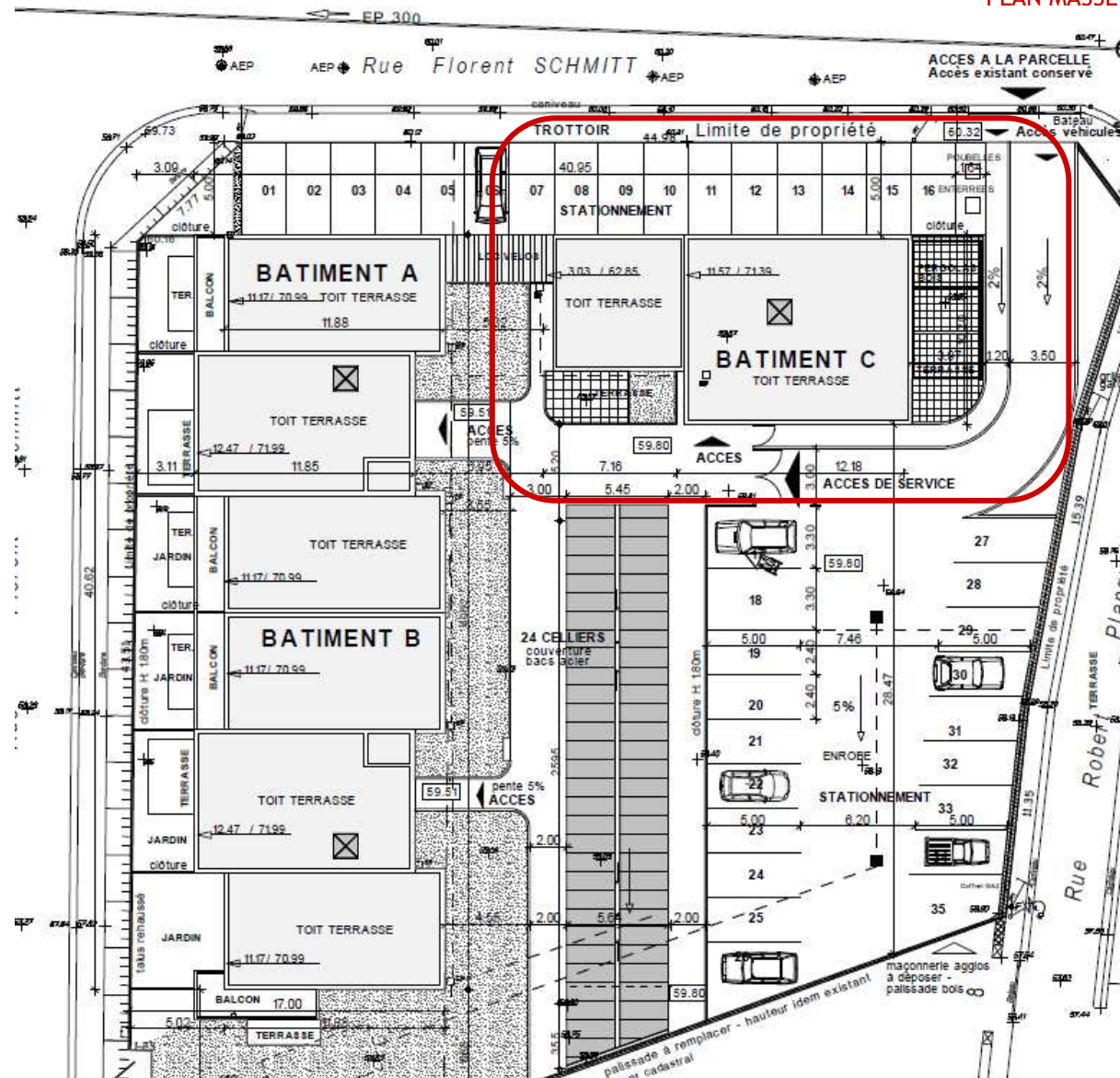


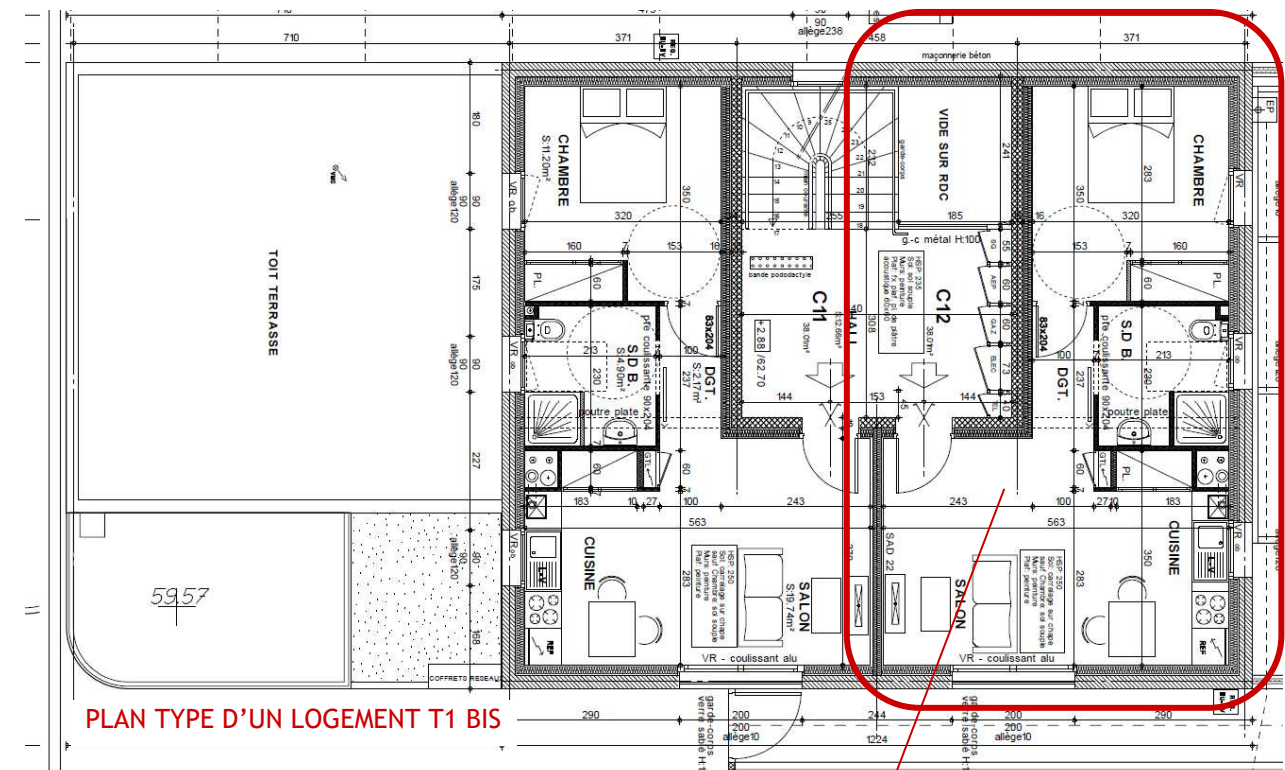
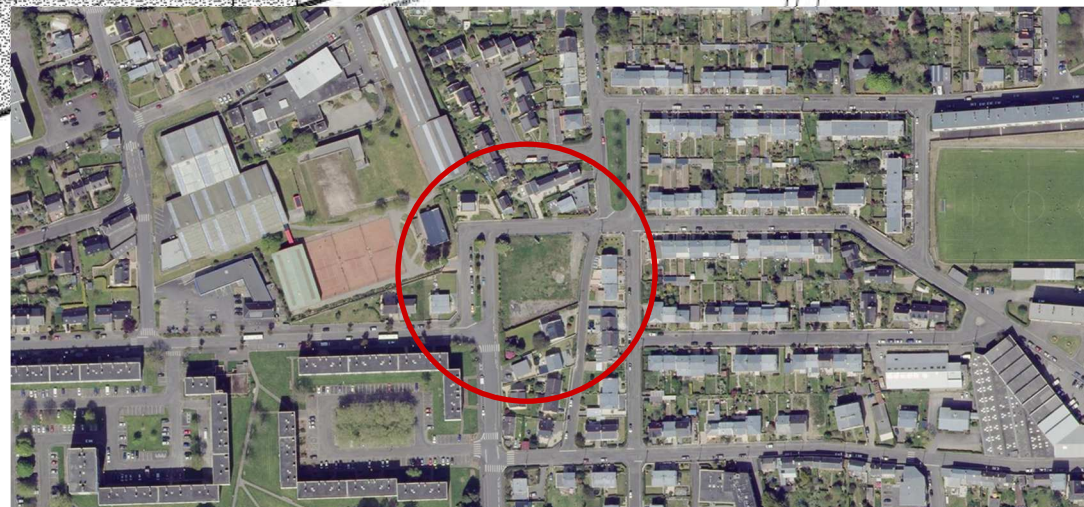
Les jardins de SALOMÉ

BREST (29)

PLAN MASSE

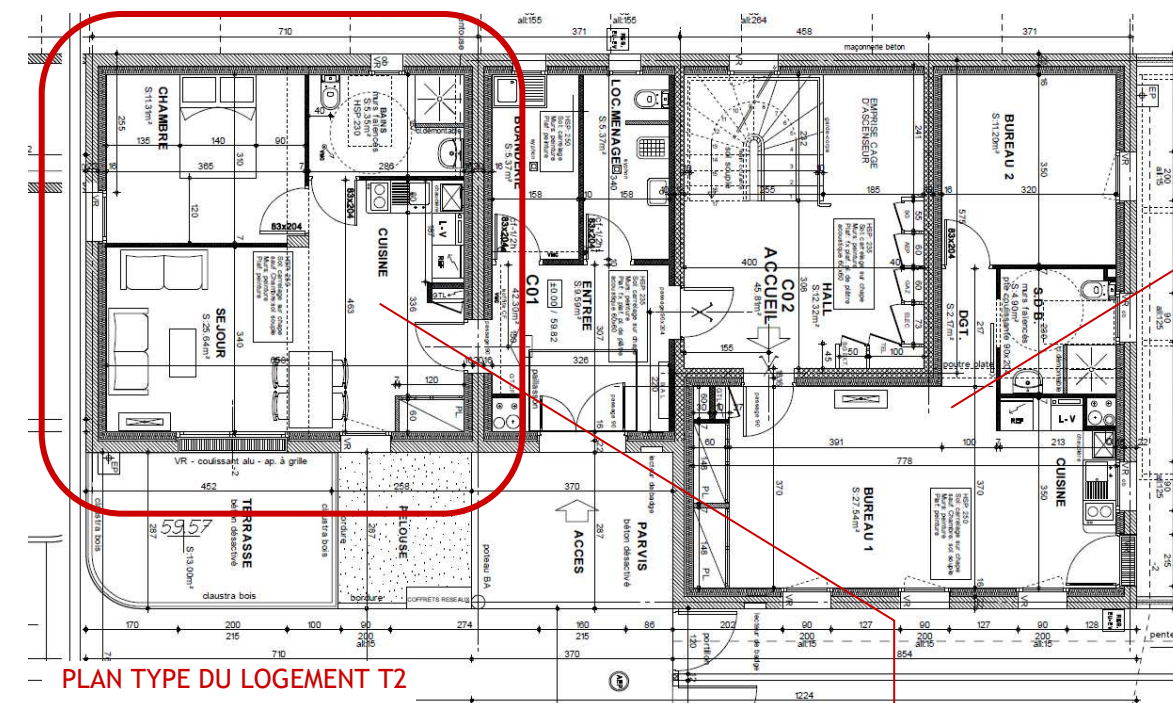


VUE AERIEENNE



PLAN TYPE D'UN LOGEMENT T1 BIS

6 T1 BIS Loyer (valeur 2016) : 245 €/mois



PLAN TYPE DU LOGEMENT T2

1 T2 Loyer (valeur 2016) : 272 €/mois

Logement transformé en bureaux pour DON BOSCO

LE LOGIS
BRETON